

Box Properties

--Description--

Name:

Type: Vented Box

Shape: Prism, square

--Box Parameters--

Vb = 1.4 cu.ft

V(total) = 1.716 cu.ft

Fb = 39.33 Hz

F3 = 32.71 Hz

Fill = none

--Vents--

No. of Vents = 1

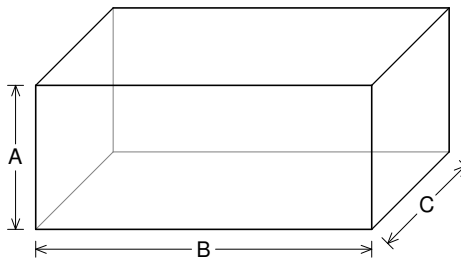
Vent shape = rectangle

Vent ends = one flush

Hv = 6 in

Wv = 1.5 in

Lv = 9.72 in



--External Dimensions--

A = 12 in

B = 28 in

C = 12.15 in

--Internal Dimensions--

A = 10.5 in

B = 26.5 in

C = 10.65 in

--Wall Thickness--

Front = 0.75 in

Side = 0.75 in

Driver Properties

--Description--

Name: SXX 10 D4

Type: Standard one-way driver

Company: RE Audio (2015)

--Configuration--

No. of Drivers = 2

Mounting = Standard

Wiring = Parallel

Drivers sum coherently = Yes

Dual voice coils = parallel

--Driver Parameters--

Fs = 55.41 Hz

Qms = 9.922

Vas = 0.203 cu.ft [0.406]

Xmax = 1.1 in

Sd = 50.17 sq.in [100.3]

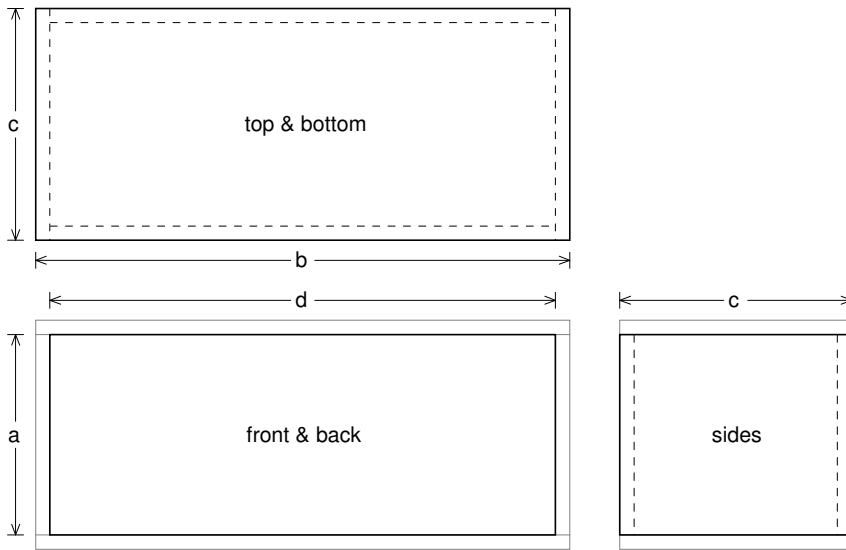
Qes = 0.797

Re = 2.006 ohms [1.003]

Le = 2.505 mH [1.252]

Z = 2.408 ohms [1.204]

Pe = 1200 watts [2400]



Box Parts

Box Shape: Square Prism

1 Top, 1 Bottom: depth (c) = 12.15 in
width (b) = 28, thickness = 0.75 in

1 Front, 1 Back: height (a) = 10.5 in
width (d) = 26.5, thickness = 0.75 in

2 Sides: height (a) = 10.5 in
depth (c) = 12.15, thickness = 0.75 in

--Driver Mounting--

Mounting: Front

Aim: All drivers face same direction

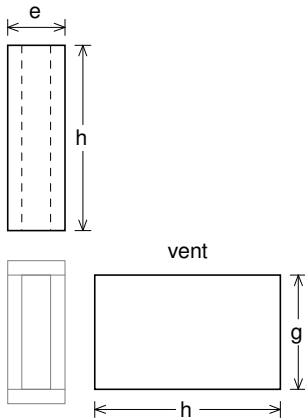
--Vent Parts--

1 Top, 1 Bottom:

width (e) = 3, length (h) = 9.72 in
thickness = 0.75 in

2 Sides:

height (g) = 6, length (h) = 9.72 in
thickness = 0.75 in





Wiring Diagram

